

Galeria Aniela Fine Art Galley and Sculpture Park

261a Mount Scanzi Road Kangaroo Valley NSW 2577 Australia T: 61 2 4465 1494 <http://www.galeriaaniela.com.au/>

October 2007 GA Art Market Report - News update

We hope that you take pleasure in reading our October issue Art Market News Report 2007. We endeavour to provide you with friendly, professional and personalised service and informed advice. We persist supplying the finest of art, strive to improve our services and welcome your comments. I value your interest in our sales very highly and appreciate and thank you for your support and patronage. I look forward to hearing from you meanwhile wish you good health, joy and success.

Aniela Kos T: 61 2 4465 1494 +0409 980 618

Since 1994 Galeria Aniela has experienced extraordinary growth in our client and support base. Experienced in top-quality art by important Australian artists we are building art investments for Australian and international clients selling fine Australian art in Australia as well as England, USA, Korea, Holland, France, Singapore and Hong Kong and we take pleasure in building the lasting relationships.

Galeria Aniela latest important arrivals

Please visit our site and enjoy our hottest original arrivals: Arthur Boyd (1920- 1999), John Olsen (B.1928-), Charles Blackman (B.1928-), David Boyd (B. 1924-), William Sandy (B.1944-) Anna Petyarre we look forward to hearing from you, happy to make an appointment and email you a high resolution photo.



[Arthur Boyd](#)



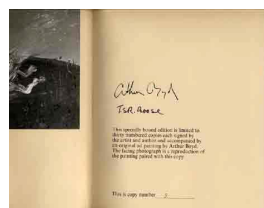
[Arthur Boyd](#)



[Arthur Boyd](#)



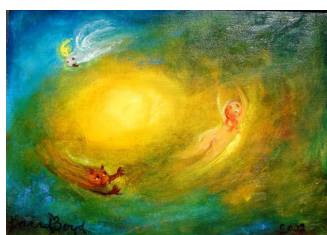
[Arthur Boyd](#), [Nebuchadnezzar](#)



[Arthur Boyd](#) [Nebuchadnezzar](#)
book



[Arthur Boyd](#) Front



[David Boyd](#) [Legend Europa](#)



[David Boyd](#) [Blue Roses](#)



[David Boyd](#) [Bathers by a Lagoon 1970](#)



[David Boyd](#) [Watching Sails](#)



[John Olsen](#) (B.1928-)



[John Olsen](#) [Landscape](#)



[Charles Blackman](#) (B.1928-) [Flowers](#)



[Charles Blackman](#) [Girl 1970](#)

Galeria Aniela Art Auction – Sunday, 2nd December 2007

We warmly invite you to participate in an art auction on Sunday 2 December 2007 to raise funds for the Rural Fire Brigade and have fun (5 % buyer's premium donated to the Rural Fire Brigade). The viewing starts from 10.30 am and complimentary champagne will be offered, with the auction commencing at 12.00 noon (*sharp*). Registration is required and absentee bidding is welcome. To view the auction catalogue please visit <http://www.galeriaaniela.com.au> (*mid November*).

Christmas festivity

Ready for imminent Christmas we have smaller size contemporary, vibrant paintings by highly regarded Eileen Bird, Lily Lion, Elsie Dixon, Judy Greeny, Katie Kemarre, and Patsy Long, Ruby Morton and Maureen Purvis and more including [Tessa Perceval](#) (B.1947-) and [Bogdan Fialkowski](#) (B. 1943) please visit our site.

The prestigious 2007 Telstra Aboriginal Art Award in the Museum NT in Darwin

In August Aniela Kos attended the 2007 prestigious Telstra Aboriginal Art Award ceremony in the Museum NT in Darwin visiting Kakadu National Park and Alice Springs. To view [the video from the 2007 Art Award](http://www.galeriaaniela.com.au/Galeria%20Aniela%20Video%20movies.htm) please visit <http://www.galeriaaniela.com.au/Galeria%20Aniela%20Video%20movies.htm>.

Aboriginal Art

we hope you take time to enjoy the [VIDEO](#) from [the Honorable Bob Hawke, the former Prime Minister of Australia](#).



[the Honorable Bob Hawke, the former Prime Minister of Australia](#)



[Ningura Napurrula](#)



[Gloria Petyarre](#)



Charlie Tjapangati (b.1949-)



[Minnie Pwerle](#)

Success in the timing - "supply & demand"

Instead of buying art, buy an investment art and, good timing can help investor's returns. The secret to great investment is good timing and long-term results. We advice to follow your heart, buy the one you love, the best you can afford and most typical artwork of an artist you admire. The celebrated artists [Gloria Petyarre](#) (b.1945-) and [Ningura Napurrula](#) B.1938, one of the most famous artists represented in Musée du quai Branly in Paris Europe's most important public museum **are getting blind**. [Nyurapayia Nampitjinpa \(Mrs Bennett\)](#) (b.1938) and [Kathleen Petyarre](#) health is rapidly declining (represented in [National Gallery of Australia](#), [Art Gallery of NSW \(Sydney\)](#), [National Gallery of Victoria](#), [Queensland National Art Gallery](#), [Museum & Art Gallery Northern Territory](#) and around the world. These artists work is in high demand and as to "supply & demand" so the prices have to go up without delay, please visit our site and to make purchase please [contact us](#).

Art Market update

The performance of the Australian art market is consistent and matches with the positive record of investment art. Famous artist's works have reached the new highs. [David Boyd](#) "Burke & Wills Bed Down for the Night" (minor work) fetched \$54,000 against the pre-sale expectation \$10,000 - \$15,000. **At one time auction houses were wholesaling art, at present they are mostly retailing** playing critical role in the art economy. [Joel Fine Art lot No: 56 Arthur Boyd Shoalhaven at Dusk](#) by size 30 x 21cm, oil on



copper priced **\$60,000-\$80,000** plus 20% buyers premium and also GST.

Fine Art is "Super" Good

Art is pleasurable and can offer a better return than other investments. When setting an investment strategy you may look at fine art as one of your premier assets. For collectors who are looking at alternative tax arrangements and considering a work of art as an asset in a Do-It-Yourself Super Fund can invest 5% of the total Super-Fund in art. Easier than juggling percentages of the supper funds between 'Cash', 'shares' 'Local Equities', 'International Equities', 'Bonds' and 'Real Estate'. It makes good sense to seriously consider 'a work of art' as an asset.

Art investment Recount

In the commodity driven world an original work of art is desirable for its uniqueness. The famous artist's works perform usually better than a share market and give more pleasure than real-estate. [David Boyd](#) (born 1924) art has experienced strong growth among investors in Australia and around the world, view [David Boyd](#) top-quality works on our site. Below art value performance compared against pre-sale expectation at the major Australian auction houses in 2007

Lot 97	Arthur Boyd (1920-1999), Shoalhaven oil	Pre-sale expectation \$140,000 - \$180,000	Sold \$204,000
Lot 98	Arthur Boyd (1920-1999), Riversdale Hill oil	\$200,000 - \$300,000	\$264,000
LOT 38	Arthur Boyd (1920-1999) Eaglehawk 61x79cm	\$180,000 - 250,000	\$264,000

Australian art experience very strong growth.

Sotheby's Melbourne \$2,400,000	Tjapaltjarri, Clifford Possum	<i>Warlugulong 1977</i>	Synthetic polymer paint on canvas Lot No. 114
Lawson~Menzies \$1,056,000	Kngwarreye, Emily Kame	<i>Earth's Creation, 1995</i>	Sydney 23/05/2007, Lot No. 60
Mossgreen Auctions \$1,075,500	Olsen, Henry please visit John OLSEN	<i>Love in the Kitchen, 1969</i>	Oil on canvas, 199 x 213cm, Hobart 15/10/2006, Lot No. 111
Sotheby's Melbourne \$1,020,000	Blackman, Charles visit Charles BLACKMAN	<i>Alice's Journey</i>	Tempera and oil on composition board, 122 x 275 cm, 21/11/2006, Lot No. 30
Sotheby's Melbourne \$432,000	Shead, Garry visit Garry SHEAD	<i>Queen Suburbia</i> \$200,000-300,000	27/08/2007, Lot No. 17
Sotheby's Melbourne \$39,600	Napangardi, Lily Kelly visit Lilly Kelly Napangardi	<i>Sandhills Around Mount Leibig</i>	24/07/2007, Lot No. 167

About commercial art galleries

Galleries nurture regular patrons regardless of their wealth guiding and advising on the most appropriate purchases according to the patron's means, personal taste and interest. Commercial Gallery directors spend time researching and seeking knowledge, willingly and freely sharing with their patrons. Gallery director's business acumen with an eye for the highest quality and passion is beneficial to discerning art collectors-investors. A friendly relationship with an experienced gallery director is priceless, and to your advantage to help on starting and building up art collection. A gallery director can be a mentor and a loyal friend to get you a rare work of art which suitable for you to enjoy and may grow into a viable perhaps one of your most valuable investments.

Art is one of the most viable and certainly the most pleasurable investments. Following a meticulous research of current half a year auction results (sales totals over \$10,000 sold, cleared, the record results & links).

13-Sep-07	Australian and International Fine Art, Lawson~Menzies, Syd	\$2,593,350	89%	82%	1
12-Sep-07	Australian and International Fine Art, Deutscher~Menzies, Syd	\$12,383,520	108%	86%	8
29-Aug-07	Australian International Fine Art, Deutscher&Hackett Melb	\$6,921,810	86%	71%	6
27-Aug-07	Important Australian Art, Sotheby's, Melbourne	\$11,385,000	79%	66%	9
14-Aug-07	Australian & International Art, Joel Fine Art, Melbourne	\$2,171,797	56%	56%	1
07-Aug-07	Australian, International & Aboriginal Fine Art, Bonhams & Goodman	\$4,548,060	N/A	67%	5
24-Jul-07	Important Aboriginal Art, Sotheby's, Melbourne	\$8,207,940	97%	71%	15
13-Jun-07	Fine Australian & International Art, Deutscher~Menzies, Syd	\$14,298,240	116%	77%	4
05-Jun-07	Important Aboriginal Art, Joel Fine Art, Melbourne	\$1,318,030	66%	65%	1
23-May-07	Aboriginal Fine Art , Lawson~Menzies, Sydney	\$4,821,960	79%	65%	9
09-May-07	Australian International Fine Art, Deutscher and Hackett Melb	\$8,582,820	113%	77%	6
07-May-07	Important Australian Art, Sotheby's, Sydney	\$22,450,620	152%	84%	10

Thank you for reading Galeria Aniela October issue Art Market News Report 2007. We endeavour to help you to make an informative decision, value your interest in our sales very highly and appreciate and thank you for your support and patronage. I look forward to hearing from you meanwhile wish you good health, joy and success.

With warmest regards,

Aniela Kos
T: 61 2 4465 1494
+0409 980 618