

# Galeria Aniela Fine Art Galley and Sculpture Park

261a Mount Scanzi Rd, Kangaroo Valley NSW 2577 (02) 4465 1494 [aniela01@bigpond.net.au](mailto:aniela01@bigpond.net.au) [www.galeriaaniela.com.au](http://www.galeriaaniela.com.au)

## Art News Bulletin

May 2007

We thank you for your interest in our gallery as our extraordinary growth is due to the loyalty and market support our clients have shown us. We are continually working to bring you the finest quality art and we hope that a visit to our gallery is an enjoyable and rewarding experience. If you have any comments how we can improve our service to you please contact us, we would love to hear from you. We are now delighted to bring you a major exhibition of sculpture and paintings by important Australian artists. The exhibition officially opens on Saturday, 23 June 2007, **catalogue due online 10 June 2007** at [www.galeriaaniela.com.au](http://www.galeriaaniela.com.au).

**Saturday, 23 June** 2.30pm – a movie about Aboriginal culture  
3.00pm – an exhibition tour "tour and talk" with the gallery Director  
3.30pm – Sculpture Park tour with Col Henry depicting his work.

There will be a tour "walk and talk" of the gallery and Sculpture Park. The artworks on display will be introduced by the artist who will be pleased to answer any of your questions. This will be a lovely opportunity for you to learn more about sculpture as well as Aboriginal art and to enjoy the company of others who appreciate fine art.

**COL HENRY**, a renowned sculptor with over the forty years dedication to his art, has pioneered a ground-breaking technique which marries the resilience of steel to the fragility of glass, conceiving a revolutionary leading edge series of ultra-modern sculptures known as GOSSAMER SHADOW.

**For the first time ever**, the avant-garde Gossamer

Shadow sculptures are on display at the Galeria Aniela Fine Art Gallery Sculpture Park. Some are over six meters tall. Once you see this work in a garden setting you will be able to imagine how wonderful it would look in public and private spaces situations, both indoors and outdoors. Col Henry is represented in private and public collections in Australia and on the international art scene. Worldwide, Col Henry is a recognised pioneer and an innovator. His GOSSAMER series is a landmark in Australian art. The work involves physically sketching in space and creating shadow sculptures, using 'Cold-Cast and Pure Glass' with Steel and Stainless Steel, to create complex three-dimensional forms with a matrix that is formal, conceptual and elegant. There is a rhythm in this meditative and engaging work. His visual three dimensional works are metaphors for imagination. Subtle variations in the patterns may seem chaotic however imply organic references and definite order.



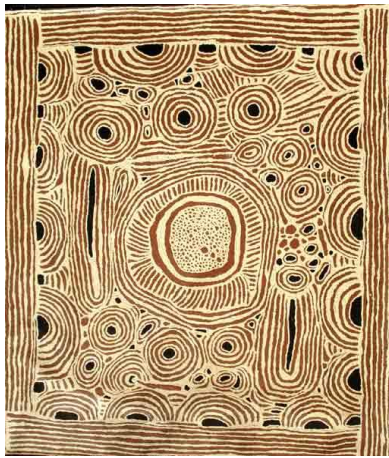
Paintings are by internationally renowned Aboriginal Australian artists **NINGURA NAPURRULA, NANCY ROSS Nungarrayi** and **Mrs. BENNETT Nyurapayia Nampitjinpa**. As a measure of the importance of these artists their works fetch high prices at major auction houses see <http://www.lawsonmenzies.com.au> current auction.

**NINGURA NAPURRULA** (b. 1938- ) is one of the eight great Australian artists whose work is featured in the collection of Musée du quai Branly in Paris, the Europe's most important public museum. Ningura paintings are eternally applied to the museum ceiling like the famous Michelangelo Sistine Chapel ceiling. Her work is represented in Australian National Gallery, Art Gallery of NSW,



National Gallery of Victoria, and Queensland Art Gallery, Museum and Art Gallery Northern Territory museums and important public collections around the world. Ningura was part of the original group of the higher-ranking women who began painting for the famous Papunya Tula Artists which founded the Aboriginal





Art Movement in 1971. Ningura Napurrula is one of the Australia's most important and collectable artists.

**Mrs. BENNETT NYURAPAYIA NAMPITJINPA** (b. 1935- ) is an important artist represented in Art Gallery of NSW, Artbank, National Gallery of Victoria, Museum and Art Gallery of Northern Territory and corporate and private collections around the world.

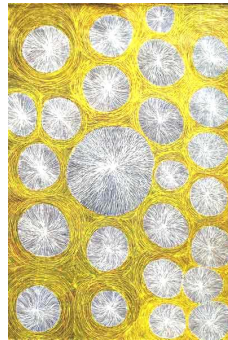
**NANCY ROSS Nungarrayi** (b. 1935- ) work is represented in corporate and private collectors in Australia and throughout the world. Nancy was included in the famous "Kiwirrkura" Women's project; the paintings were published in the "Papunya Tula" and auctioned to raise funds for the "Kintore" home.

We are proud to show you new paintings by Lucky Morton, Kathleen Petyarre, Gloria Petyarre, Gracie Morton Pwerle and Minnie Pwerle.

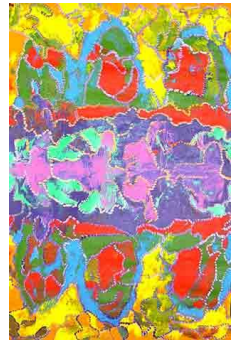
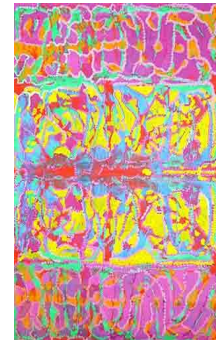
**All paintings are now for sale and we invite you to enjoy it.**



**Aboriginal art** is considered the world most important art that come out from this prehistoric land and we are proud of Aboriginal art. This ancient culture of over 60 thousands years old, gave the world its most exciting form of contemporary art. It



is also a living tradition, having taken its current form, in an explosion of creativity, in the second half of the Twentieth Century. However already many of those artists have passed away and the younger generation are learning the western customs. Today Aboriginal Australians live and work around the world, from Papunya to London, from Arnhem Land to New York. Thus, it is probably the last chance to obtain high-quality paintings of

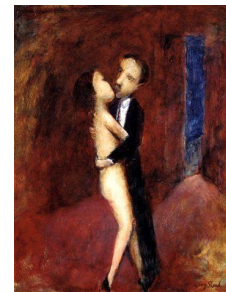


significant Australian artists who are internationally renowned and represented in all Australian National galleries.

### Australian art fetch record prices at Sotheby's auction



At latest auction Australian paintings broke record of \$22 million in total Sotheby's Sydney sales. Australian art is one of the most viable (and pleasurable!) investments. John Brack 'The Old Time', a couple ballroom dancing with the reserve of 600,000 to 800,000 fetched \$3.3 million. Brett Whiteley Sydney's Opera House topped \$2.88 million with commissions setting a new sales record for the artist. John Olsen small watercolour sold for \$56,400. Arthur Boyd landscape estimated \$350,000-450,000 fetched \$660,000. BRIDE sold for \$186,000. Garry Shead FRIEDA sold for \$108,000. Charles Blackman CAT'S GARDEN estimated \$250,000-350,000 sold for \$528,000. STARGAZER fetched \$180,000 and FAIRYTALE \$102,000.



When you purchase art at Galeria Aniela, whether by an acclaimed artist or an established artist, you make a valuable contribution to our mission of helping artists make a living with their creations. Whether you are a first time art buyer, an enthusiastic art collector or a strategic investor we are committed to provide you with a friendly and clear advice according to your individual taste in art and we are happy to guide you towards finding the right work of art for you. Our people focus approach ensures that you have and an enjoyable and rewarding experience and if required we aim to make special arrangements.

### Gallery Stock-Room

We decided to discontinue Scobie Napurrula, Colleen Nampitjinpa, Fabrianne Peterson, Mitjili Napurrula, Lynette Corby, Maurine Morgan hence we offer genuine price-cut on these artists top-quality works, please contact us.

**Considering the importance of the GOSSAMER SHADOW collection, the exhibition is held for an extended period of three months 23 June-23 September 2007. We invite you to visit the gallery as well as Sculpture Park and to enjoy this major and exciting exhibition. We look forward to seeing you on Saturday, 23 June 2007 and trust that we can be of service to you.**

With best wishes,

Aniela Kos  
Director

**Gallery & Sculpture Park OPEN to public: Sat-Sun, 11-4pm**  
**Phone (02) 4465 1494** [www.galeriaaniela.com.au](http://www.galeriaaniela.com.au)

**Appointments: Mon-Fri.**  
**E: [aniela01@bigpond.net.au](mailto:aniela01@bigpond.net.au)**